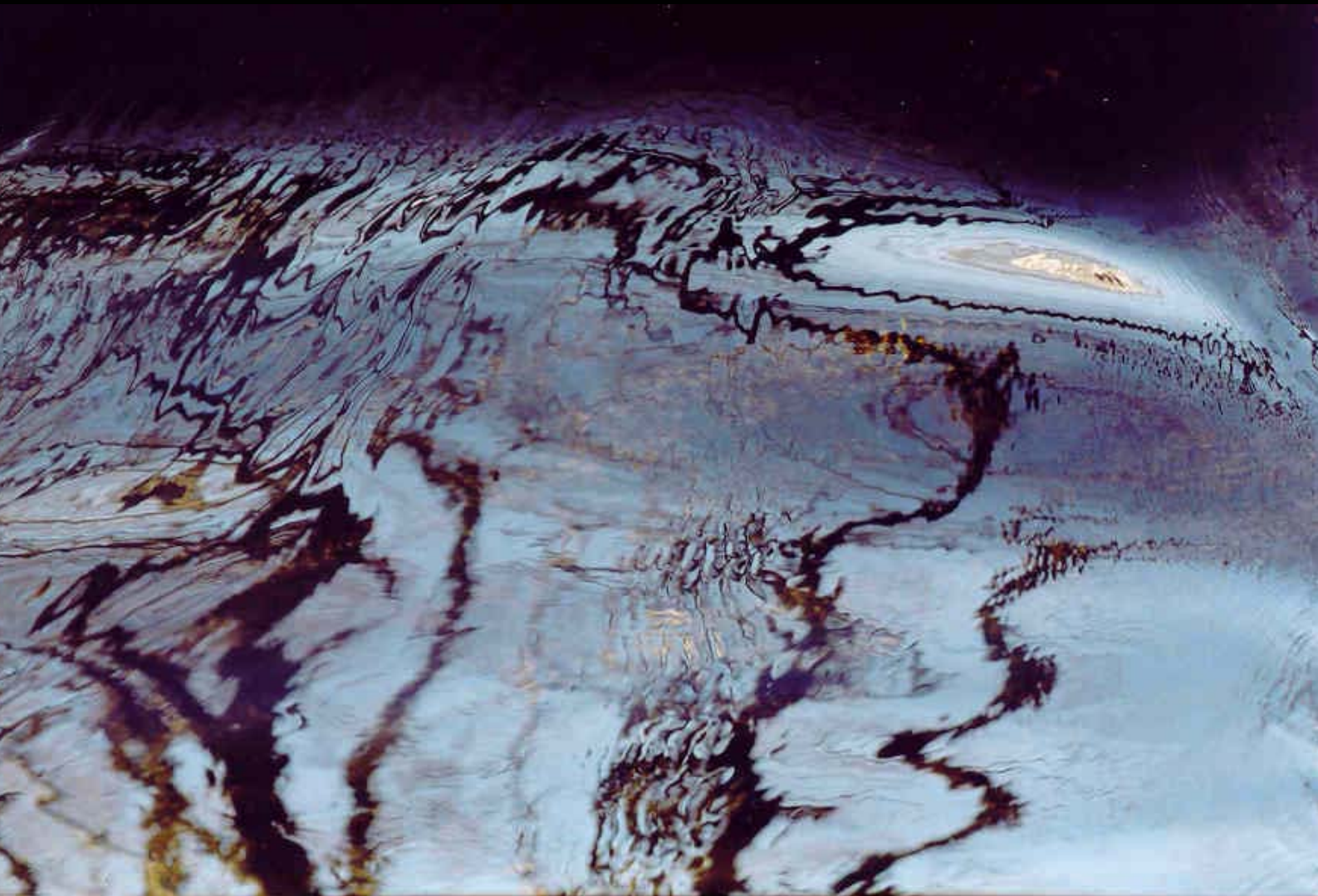




IMPACT!

Newsletter of the
Wellington Photographic Society Inc. (Estd. 1892)
www.wps.org.nz

SEPTEMBER 2006



in this issue.....

★ From the Editors ★ What's on in September ★ What's on in October ★ Competitions ★ Shows & Exhibitions ★ WPS Articles ★ WPS News & Information ★ Society Contacts ★

Cover image by Fred Wotton

From the Editors

Hello all!

It is an exciting time of year for the Wellington Photographic Society – when we plan activities for the year coming up.

We've packed a lot into recent years: "behind the scenes" visits to places like Te Papa, great speakers like Marti Friedlander & Simon Townsley, advertising and commercial photographers giving away some of their secrets, not to mention a surprisingly candid talk by a police forensic photographer.

Now you've got the chance to let us know what you'd like to see and do as we develop the upcoming programme.

Images by Glen Howey (www.cambodiatrust.com)



- Do you want inspirational show-and-tell talks from established photographers?
- Would you prefer more practical events such as the August "Back to Basics" evening?
- Should we spend more time looking at and commenting on members' own work?
- To what extent should we pay greater attention to the technology around digital photography – choosing and using digital cameras, printers and software?

Along with the IMPACT email you will also have received a survey form this month, where you have the chance to guide us as we plan for the future. These forms will also be available at the next meeting. Please grab this opportunity to tell us what you think.

It is an exciting time for the Society for another reason too – as we welcome new faces on to the committee and new members into the Society.

Even if you don't have the time to make a longer-term commitment towards WPS such as standing for the committee, your input is still important. Let us know what you'd like your Society to do as it enters its 115th year.

Cheers!

David Hindley and Arti Sandhu

What's on in September

Annual General Meeting (AGM) followed by Glen Howey

- **Tuesday 12th September**
- The Arts Centre, Abel Smith Street
- 7.30pm

This meeting will start with a short AGM and will be followed by Glen Howey, the winner of the "Traveller's Tales" section of Travel Photographer of the Year 2005, an international photographic competition designed to find the very best in travel photography.

In the "Traveller's Tales" section, documentary and travel photography are intertwined, and the winner needed to tell a story in four images. Glen succeeded perfectly, with a memorable portfolio that documents the work of the Cambodia Trust, a charity that works with landmine victims in Cambodia. The Cambodia Trust now has clinics in Phnom Penh, Sihanoukville and Kompong Chnang. Between them the clinics have fitted around 12,000 false limbs since 1989. The Trust also set up and runs the Cambodian School of Prosthetics and Orthotics in Phnom Penh, which aims to train 60 Cambodians to take over from overseas-trained doctors



by 2020, effectively working themselves out of a job. So far 28 Cambodian students have graduated and are working for the trust, or similar aid agencies. Many of them are amputees themselves.

"I hope my images have given a human face to a country that has known such tragedy and bloodshed, but yet holds such beauty. Photography is a dramatic and dynamic medium that I feel can be used to effectively communicate the work being done to return a quality of life to those amputees, polio and cerebral palsy sufferers who have lost so much along with their limbs," Glen says.

Please note: This meeting is also the deadline for submitting prints for the WPS annual print competition (see below).

WPS Print Competition Entry Form ✂

WPS Print Competition - Entry Form (affix to reverse of prints)	
Name:	
Telephone or email:	
Title: (optional)	
Hanging instructions	<input type="checkbox"/> Vertical <input type="checkbox"/> Horizontal For abstracts write TOP on reverse
Please note that while absolutely every care will be taken with your images should any damage occur WPS accepts no liability	

WPS Print Competition - Entry Form (affix to reverse of prints)	
Name:	
Telephone or email:	
Title: (optional)	
Hanging instructions	<input type="checkbox"/> Vertical <input type="checkbox"/> Horizontal For abstracts write TOP on reverse
Please note that while absolutely every care will be taken with your images should any damage occur WPS accepts no liability	

WPS Print Competition - Entry Form (affix to reverse of prints)	
Name:	
Telephone or email:	
Title: (optional)	
Hanging instructions	<input type="checkbox"/> Vertical <input type="checkbox"/> Horizontal For abstracts write TOP on reverse
Please note that while absolutely every care will be taken with your images should any damage occur WPS accepts no liability	

!! WPS Annual Print Competition !!

- **Monday 25th September**
- The Arts Centre, Abel Smith Street
- 7.30pm
- **Judge:** Helen Mitchell

This is one of the programme highlights of the year and another opportunity for WPS members to showcase their best work and have it evaluated by an experienced judge. Plus a touch of healthy competition is always sure to encourage the creative juices. The judge for the evening will be Helen Mitchell who is a Lecturer in Photography at Massey University.

Judge Helen Mitchell is a Senior Tutor in Photography and the Programme Leader of the Diploma in Photography at Massey University. Her photographic interests include landscape and the relationship between nature and culture, documentary photography and the representation of the human form and face. She has exhibited her work at a number of exhibitions and had a major solo show at the Dowse Art Gallery entitled "The Volcanic Zone".

Competition guidelines:

Subject: "Open".

Entries per person: Maximum 3

Size of print: Prints to be mounted but unframed.

- Recommended maximum size: 40cm x 50cm (16"x20")

- Recommended minimum size: 20cm x 25cm (8"x10")

Identification: Entry forms (see left) must accompany the print and should be stuck on the back of the mount.

Closing date: Tuesday 12 September

Bring your prints to the meeting or drop off by 5pm at Art's OK, 123 Cuba Street (top end of Cuba Mall).

What's on in October

Visit to Imagelab

- **Tuesday 10th October**
- Imagelab, 22 Wigan Street, Wellington, Ph: 04 8024188
- **Time start: 6.30pm**

This promises to be a very interesting visit as Imagelab will show the club members the equipment and processes they use to produce prints and other products they manufacture. They have been extremely generous with providing us with this opportunity, so please make sure you make it to Imagelab @ 6.30pm.

For more information please contact Tim Wild at wps@mrwild.co.nz

!!Selection of Prints for WPS Annual Exhibition!!

- **Tuesday 24th October**
- The Arts Centre, Abel Smith Street
- 7.30pm
- **Judge:** James Gilberd (Photospace)
- Deadline for print submission: Tuesday 10th October meeting

The WPS Annual Exhibition is an annual opportunity for members to display their work to the public. This year's exhibition will feature a mix of framed prints and projected images. Exhibition dates are 6th to 16th November at the Toi Poneke Gallery, Arts Centre, 61 Able Smith St.

The total number of framed prints to be hung will be 48. In addition to the framed prints there will also be a new feature - the inclusion of projected images, which will be projected onto one of the gallery walls.

Our selector for the exhibition this year will be James Gilberd of Photospace, Wellington's only gallery dedicated to photography (at 37 Courtney Place). We are grateful to James for taking on this task.

Prints: The details for submitting **print** entries to be hung in the exhibition are as follows:

- Maximum number of entries per person: **4**. (Total to be hung: 48)
- Final date for submitting prints: **Tuesday 10 October**
- Prints can be submitted at the WPS meeting (at Imagelab) or alternatively to Wayne Hosie at Arts OK, 123 Cuba St. by 5pm Tuesday 10 October.
- All prints entered must be mounted/matted. The exterior dimensions of the mat must be exactly 20"x16" to fit the frames that WPS owns.
- Please use white matboard. Due to the variety of shades available WPS would like to suggest the following
 1. Bainbridge Alphamat (museum quality conservation): Snowflake 8519 or Frost 8469 (used by Arts OK)
 2. Crescent Regular Matboard (non conservation): Arctic White 3297 or Manor White 3340 (available from Gordon Harris, 170 Victoria St., Wellington. Ph 3852099.)
- Matting service is available from:
 1. Arts OK, 123 Cuba St., Wellington. Ph 3849724.
 2. Dennis Hamblin, 12 Phillip St., Johnsonville, Wellington. ph. 4789466 - ring first. (Dennis is happy to assist with cutting matt boards. Members can either supply their own matt board, or he can indent matt board on their behalf.)
- Please read below for the submission of images for projection. Deadline for this is the same



Image by Bret Collings (featured in D Photo magazine)

Judging Process: These prints will then be delivered to James, who will make his decisions, and then bring them along to the **24 October** meeting (note shift from previous date of 23 October which is Labour Day). James will briefly critique all entries ending up with the 48 prints selected. The selection criteria will include the following:

1. A wide range of subjects selected.
2. As many members as possible to have 1 print selected - subject to maintaining overall quality standards.
3. If more than 48 prints meet the above criteria, then a maximum of 2 prints selected per member will be applied.

Projected Images: The details for submitting image entries for **projection** at the exhibition are as follows:

- Final date for electronic images is also **Tuesday 10 October**.
- Up to **10** images should be submitted on a CD with the file format being JPEG, high resolution and the size being no more than 5MB per image and preferable smaller.
- No limit for number of entries. Please make sure you submit your best images.

The total number of images accepted for projection will take into account the projection system's capabilities so as to achieve a suitable total projection time. Up to the full 10 images that each member can submit may be projected.

Any queries can be addressed to Pat Duignan ph 021 975 000

Photographic Competitions

WPS Annual Print Competition

- **Monday 25th September**
- The Arts Centre, Abel Smith Street
- 7.30pm
- **Judge:** Helen Mitchell

See previous page under the 'What's on in September' section
If you have any questions please contact Fred Wotton on 04 478 5294.

5th NZ Tango Festival 2006, Image by Tony Beret



ANNUAL INTERCLUB BATTLE – Further details

Hosted by Karori Camera Club, at Karori Arts and Craft Centre on 16th August 2006.

The Judge – Don Sharpe – used a different scoring method this year – awarding points to each print. Example in round 2, all 5 prints received 4 points.

<u>Club</u>	<u>Final Score</u>
Wellington	36
Kapiti	35
Karori	31
Hutt	30
Waikanae	23

Once again a very close result – this time in our favour. We just hung on to win by 1 point over a fast finishing Kapiti Club after we had a 6 point lead at the half way stage. Thanks to all those members who submitted prints for selection and particularly to those whose prints represented WPS on the night of the Print Battle.

Judged top print in Subject: At Night – Loma Dellabarca, Triptych – Nuala Fitzpatrick.

Judged equal top print in Subject : Seaside – Fred Wotton, Flash – Loma Dellabarca, Teeth – Tony Beret

Wellington Photographic Society will be the hosts for next year's Interclub Battle

Dunedin Festival Salon – October

- Prints and Slides/Digital Slides
 - Closing date – 30 September.
- Entry forms from – John Casey, 16 Ross St., Roslyn, Dunedin or email robin.casey@clear.net.nz

Exhibitions & Shows

WPS Annual Exhibition – Information

- 6 to 16 November,
- Toi Poneke Gallery, 61 Able Smith St

The WPS Annual Exhibition is an annual opportunity for members to display their work to the public. The exhibition is a celebration of a year's work and the member's skills and expertise. The venue for this year's

exhibition is the Toi Poneke Gallery, Wellington Arts Centre (in the building next to the one in which we meet for our regular meeting). We expect to have an opening function on Tuesday 7 November 5:30 to 7pm.

Elizabeth Thomson—My hi- fi, My sci- fi

- 16 June - 24 September
- City Gallery, Civic Square. Ph: 801 3952
- Entry: free

Not really a photographic exhibition but some prints are photographic elements. Elizabeth is a Wellington based sculptor and this exhibition collates some of her largest, most audacious creations of the past twenty years. This exhibition is just stunning and is a must see.

ANOTHER VIEW - Photographs from the Seresin Family Collection

- 18 June – late September
- Opening Hours: Mon to Sat 10am - 4:30pm, Sunday 11am - 4:30pm
- Entry: Free
- PATAKA (cnr Norrie and Parumoana St, Porirua City, Ph: 2371511)

An exhibition of images by some of the world's best known master photographers. The works are drawn from the collection of international film-maker and Marlborough wine producer Michael Seresin. The exhibition includes vintage B/W photographs by Henri Cartier-Bresson, Man Ray, Bill Brandt and Andre Kertesz to name just a few.

Catching Ian Rotherham - Post Morrisonism (Room 1) Karen Lee - Havens (Room 2)

- 14 September – 9 October
- Entry: Koha (donation)
- Photospace Gallery - 1st flr, 37 Courtenay Place.
- Gallery Hours: Monday-Friday 10am - 4.30pm, Saturdays 11am - 3.00pm, closed public holidays

Contemporary Dance Photo Exhibition

- 18 September – 29 September
- Location: Fletcher Challenge Foyer Michael Fowler Centre

This wonderful collection was first exhibited in 1992 and toured New Zealand for over 18 months. As part of the 10th birthday celebrations of "Dance Your Socks Off!" these memories of New Zealand dance in the 80s and 90s are being re-exhibited. The selectors of the exhibition were photographer Grant Sheehan and the then QEII Arts Council Dance Programmes Manager Susie Patterson. The dancers featured include Douglas Wright, Susan Jordan, Lyne Pringle, Michael Parmenter and the Royal New Zealand Ballet Company.

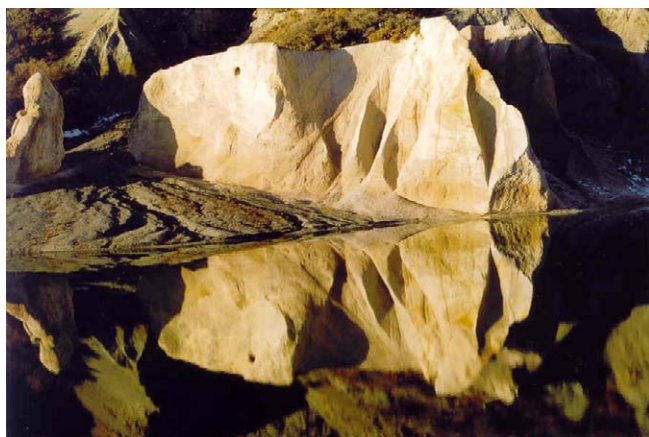
WPS Articles

WHAT IS PSNZ

By Fred Wotton

The Photographic Society of New Zealand Inc (PSNZ) was founded in 1953 and now has nearly 1200 individual members as well as approximately 60 affiliated Clubs, including the Wellington Photographic Society.

PSNZ provides a range of services and events to their members and affiliated Clubs during the year. Individual members receive the bi-monthly



Images of St. Bathans by Fred Wotton

colour newsletter "Camera Talk" and are able to participate in print and slide postal circles where groups of 10 members circulate their images amongst themselves for critiquing. This is a great way to get to know other photographers in other parts of the country, as well as improving ones photographic skills.

A National Convention is held annually, organized every alternate year by affiliated Clubs in the North and South Island. These Conventions have internationally acclaimed photographers as speakers, workshops on many aspects of photography, outings to local scenic spots and the National Exhibition. In 2004 WPS organized the PSNZ National Convention which was extremely successful. Northern, Central and Southern Regional Conventions are also held annually – WPS being in the Central region – with the 2006 Central Regional Convention being held in Hawkes Bay. PSNZ members receive substantial discounts on convention fees.

PSNZ also awards the following Honours:

Licentiate (LPSNZ): 10 images - granted in recognition of proficiency of a high order in practical photography.

Associate (APSNZ): 12 images - granted in recognition of proficiency of a higher order in practical photography than for a Licentiateship.

Fellow (FPSNZ): 18 images - granted in recognition of outstanding ability (with special regard to creative distinction and individuality) in one or more branches of photography.

These Honours are internationally recognized.

PSNZ provides a series of "Help Sheets" as well as recorded lectures illustrated with slides or on video, to both individual members and to affiliated Clubs. As part of their annual membership fee all members receive a free copy of "NZ Camera", a high quality book of members photographs which retails for more than the cost of annual PSNZ membership.

For further information on PSNZ check their website – www.photography.org.nz

WPS and PSNZ

The Wellington Photographic Society is affiliated to PSNZ and pays PSNZ an annual levy of \$4.50 for those WPS members who are not individual members of PSNZ.

This gives WPS access to all the information and resources of PSNZ. In addition, it enables WPS and its members to participate in PSNZ National and Regional Interclub competitions, such as the Bledisloe and Wiltshire National Interclub Print and Slide competitions, as well as the Central Regional Interclub competitions.

Getting Back to Basics - August 25th meeting

By Pat Duignan

The August 25th meeting took the form of a "Getting Back to Basics" presentation by a seven member team. With five separate presentations a wide range of topics were covered. **Peter Hunt** introduced the session and the speakers.

George Sutton covered the capture of light and explained ISO (film speed) and the relationship between aperture and shutter. With the help of Tim Wild operating a Canon camera George provided a full demonstration of the effects of aperture and shutter and exposure compensation settings.

Pat Duignan covered depth of field, focusing on the effects of changing aperture size. Pat's photos of a teddy bear perched precariously on his deck balustrade (see image) demonstrated his talk. **Kevin Cook** covered exposure metering. He provided a comprehensive introduction to the use of average, centre weighted and spot settings. and provided a wide range of photos that illustrated the very different results achieved by different exposure settings.

Mike Drain spoke about a number of techniques for managing challenging lighting situations, using a set of his own photographs. And finally **Alistair Owen** summed up by using a set of his own photographs of his children to very effectively illustrate the applications of depth of field and techniques for photographing moving objects using his son riding a bike as an example.



Image by Pat Duignan

Society Contacts

President: Stuart Cowley
Ph. Hm: 977 2227
Ph. Mob: 021 1511 327
Email: stu27@paradise.net.nz

Vice-President: Vacant

Honorary Secretary: Peter Hunt
Email: peter@talkingbusiness.co.nz

Honorary Treasurer: Alistair Owens
Ph Hm: 04 3864626
Email: owens@xtra.co.nz

Membership Secretary: Vacant

Programme Coordinator: Tim Wild
Email: tim@mrwild.co.nz

Publicity: Pat Duignan
Email: pat.duignan@xtra.co.nz

Competitions Secretary: Fred Wotton
Ph Hm: 478 5294
Email: fredwotton@paradise.net.nz

Impact Editors: Arti Sandhu & David Hindley
Ph Arti: 021 0332208
Ph David: 027 274 6765
Email: A.Sandhu@massey.ac.nz
Email: DavidHindley@branz.co.nz

Webmaster: David Hindley

Darkroom, Lights and library: George Sutton
Ph Hm: 476 9227
Mobile: 021 1725430
Email: gdsutt@ihug.co.nz

Immediate Past President: Liga Rodgers
Ph Hm: 478 9694
Email: liga@xtra.co.nz

Many thanks the presenters and to **Tim Wild** for providing his camera for live demonstrations and to Peter for managing the session. We hope to include some of the discussion from the meeting in future Impacts.

WPS News and Information

Congratulations to WPS members...

Brett Collings for having an image selected and featured in D Photo magazine (child photography issue).

Wellington Photographic Society for coming 3rd in the 2006 PSNZ Central Regional Interclub Print Competition held in Napier over the weekend of 1 to 3 September.

Fred Wotton had an Acceptance in the Open Print section of the Central Regional Salon for his print "Ancient Windows".

WPS welcomes new members

Aaron Davys, Keith McNabb, James Barwell, Neil Doherty, Libby Pluridge, Paula Kerslake, Dasha Korban, Marnie Whiteside, Craig Phillips and Patricia Hehir.

WPS Membership Secretary Position

The role of membership secretary is becoming vacant. Anyone interested in taking on this position can contact Fred Wotton or Alistair Owens for more information. A job description will also be available during the next 2 club meetings.

Renting Frames

The Society has 50 wooden frames, with glass, all the same size of 16 X 20 inches. They are available for hire by financial members of the Society for members' individual or group exhibitions. The cost is \$6 per frame per fortnight, with a bond of \$60 for up to 12 frames rented and \$120 for 13 or more. Please see Liga Rodgers for details.

Darkroom Users

If you have any questions regarding using the Darkroom or joining the B&W Special Interest Group please contact George Sutton on 021-172-5430 or email at gdsutt@ihug.co.nz, or contact the Arts Centre.